

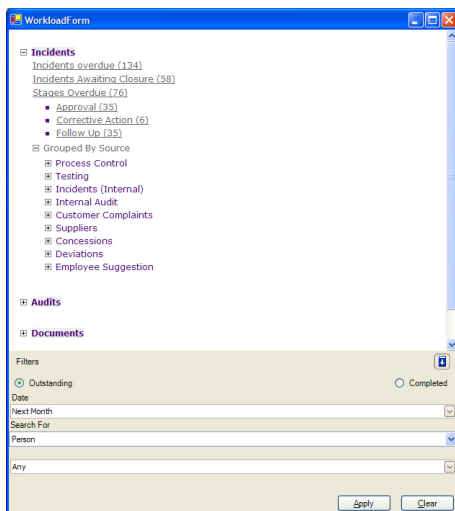
Q-Pulse®

Planning compliance workload

Effective planning of compliance management activities is essential if an organisation is to maintain adequate control over its due diligence efforts. Failure to plan and prepare for compliance actions will result in activities drifting past their target dates, thereby undermining the organisation's ability to demonstrate due diligence and control.

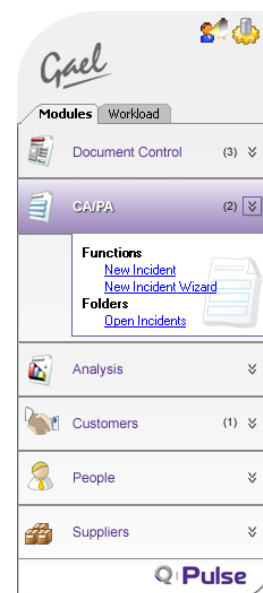
When planning compliance activities in Q-Pulse, it was **our objective to provide you with a solution** that would:

- ensure that managers plan and prioritise their approaching compliance management activities
- enable staff to easily access their own compliance actions and plan their workload accordingly
- ensure that management knows exactly who needs to do what and by when and can monitor accordingly
- maintain due diligence efforts by thoroughly planning compliance actions and resourcing accordingly
- prevent compliance activities from escalating out of control through effective planning, reminding and escalating



How does Q-Pulse achieve this?

- single status report enables rapid healthcheck of compliance status
- personal action plan on system start-up
- automatic notification of assigned compliance actions
- reminder messages when a planned task is approaching or overdue
- escalation messages when overdue actions have exceeded control limits



The Q-Pulse solution meets each of the above objectives and in addition:

- avoid information overload – highlighting only those suppliers that are relevant to the individual, group or area
- provide watertight security – restricting or providing access to suppliers as you see fit
- is easily deployed – one window providing point of reference across the complete compliance management system.
- is easy to use – one click away from the information you need.